



Daesang Information Technology

IT Business Service Provider

Contents

I . CEO message

II . Company Overview

III . History

IV . Organization

V . Business area

VI. Business

VII. Solution Partners

VIII. Reference

IX. Daesang affiliates

X. Communication Channel

CEO message

Creating a new IT business paradigm as a constant challenge through change and innovation



Daesang Information Technology Since its foundation in 1991, we are leading IT service company that provides reliable IT consulting and optimal solutions to our customers through professional knowledge and abundant technical force.

Having specialized ERP, IT outsourcing, ITSM faculty and solutions, we are building infrastructure to provide integrated services such as database, database linkage solutions, backup recovery, storage with global vendors such as Oracle, Veritas and NetApp etc.

In addition, by building new IT technologies such as Big Data, IoT, cloud, and open source with various business models, we can contribute to creating high value of customers by providing promising solutions that are customer-oriented and can lead the future.

Daesang Information Technology is aimed at the open corporate culture with the continuous development and challenge of each employee. We will be a true partner of our customers with a developing mind. Thank you.

CEO Seung Hu Oh

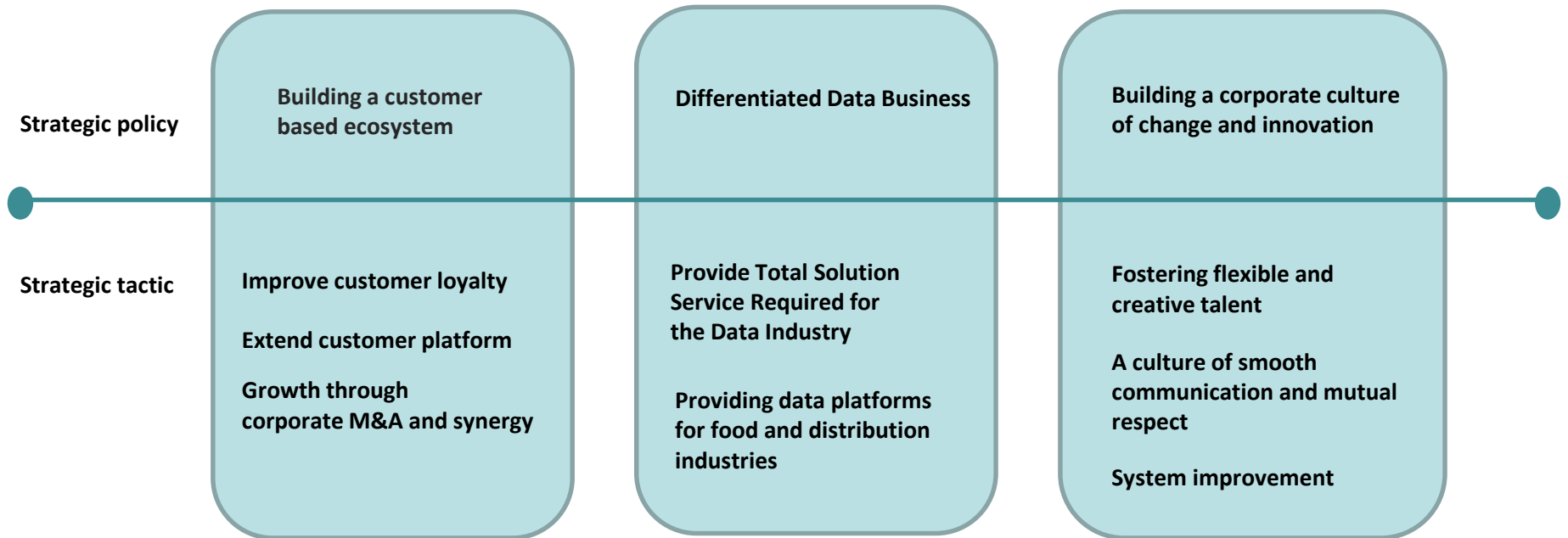
Company Overview

Daesang Information Technology is an IT service affiliates of Daesang Group which is a major domestic general food company. Daesang Information Technology has been providing consulting of database, middleware, application, system regarding food and distribution industry. Also, we have been providing total solution of cloud and mobile which is needed for data industry. Especially, we have been offering professional technical services in the area of data industry with skilled business partners as Oracle, Veritas, Quest, NetApp, Vmware, Jennifersoft etc.

Revenue	90 Billion (Won) (CY 2021)	Capital Stock	8 Billion (Won)
CEO	Seung Hu, Oh	Employee	149
Foundation	July 5, 1991		
Business	Consulting, System Integration, IT Outsourcing, Solution Provision		
Homepage	www.daesangit.com	Contact	+82-2-3408-0114
Business Place	<ul style="list-style-type: none">Headquarter: 549, Cheonho-daero, Gtower, Gwangjin-gu, Seoul, Republic of KoreaIDC: 779, Taejang-ro, Gimpo-si, Gyeonggi-doJeonju Branch: 32-5, Sollae 1-gil, Deokjin-gu, Jeonju-si, Jeollabuk-doGwangju Branch: 277, Hyodeok-ro, Nam-gu, Gwangju		
Daesang affiliates	Daesang Holdings , Daesang , Daesang Welllife, Daesang Information Technology, Daesang Networks, Daesang Construction, Daesang Dives, Daesang Foundation, Daesang food plus, Haesung Provision, etc. (14 domestic companies, overseas 20 companies)		

Company Overview

Customer Platform & Data Value Chain No.1



History

2021 ~ Current

2011 ~ 2020

1991 ~ 2010

2021 ~ Current

2023.05 FY23 Veritas Best Distributor Award
2023.02 KCloud Veritas Appliance supply
2022.12 Mandobrose Oracle ULA amendment contract
2022.07 “Next-Generation KONEPS” Intergration NAS construction
2022.05 KYOBO LIFE Oracle ULA PS contract
2022.04 HANWHA LIFE Oracle Exadata supply
2022.02 2021 Huawei Korea Best Partner Award
2022.02 Questsoftware TOAD VAD contract
2021.10 Oracle MP(Managed Partner) contract
2021.09 Informatica Key Partner contract
2021.09 Huawei VAP(Value Added Partner) contract
2021.09 SherpaSoft Key Partner contract
2021.09 Relocation of headquarter
2021.07 Korean Air C&D Service Corp Oracle Cloud MSP
2021.06 Construction of Daesang global homepage Oracle Cloud System
2021.05 Korean Air C&D Service Corp Oracle Cloud Service contract
2021.02 CHOROCMAEUL Oracle Cloud Service contract
2021.01 Relocation of Data Center to Gimpo



History

2021 ~ Current

2011 ~ 2020

1991 ~ 2010

2011 ~ 2020

2020.08 DCM-Daesang Cloud Monitoring possession

2020.04 NGE Project Completion (SAP S4HANA)

2019.06 Acquisition Oracle Cloud CPMP

2018.11 Commendation of MOLIT regarding “Barcode Label Inspection using Smartphone Camera”

2018.09 HMM Infra Cloud PJT License Introduction

2018.05 Winning Contract regarding HMM Cloud Next Generation Infra design/construction project (SAP Cloud Transfer)

2017.12 “GOODAPPS Mobile Platform” solution development and program copyright registration

2017.09 VERITAS KOREA Distributor Contract

2016.03 SIMMSSOFT VAD contract(SIMMS solution)

2015.07 Construction of Gwangju new school administrative system

2015.06 Nagosoft partner contract(AppDynamics solution)

2015.05 NetApp Star Partnership acquisition

2013.07 Distributor of KL Matrix(DB Encryption Solution)

2012.12 Information Security Award 2012

2011.08 Oracle all product VAD contract (DB, MW, HW, MySQL, Linux & VM, Engineered System)

2011.06 Constructed Daesang Group new integrated groupware

2011.04 Establishment of an in-company venture “VillaApp studio”

2011.03 Extending IDC and building server virtualization



History

2021 ~ Current

2011 ~ 2020

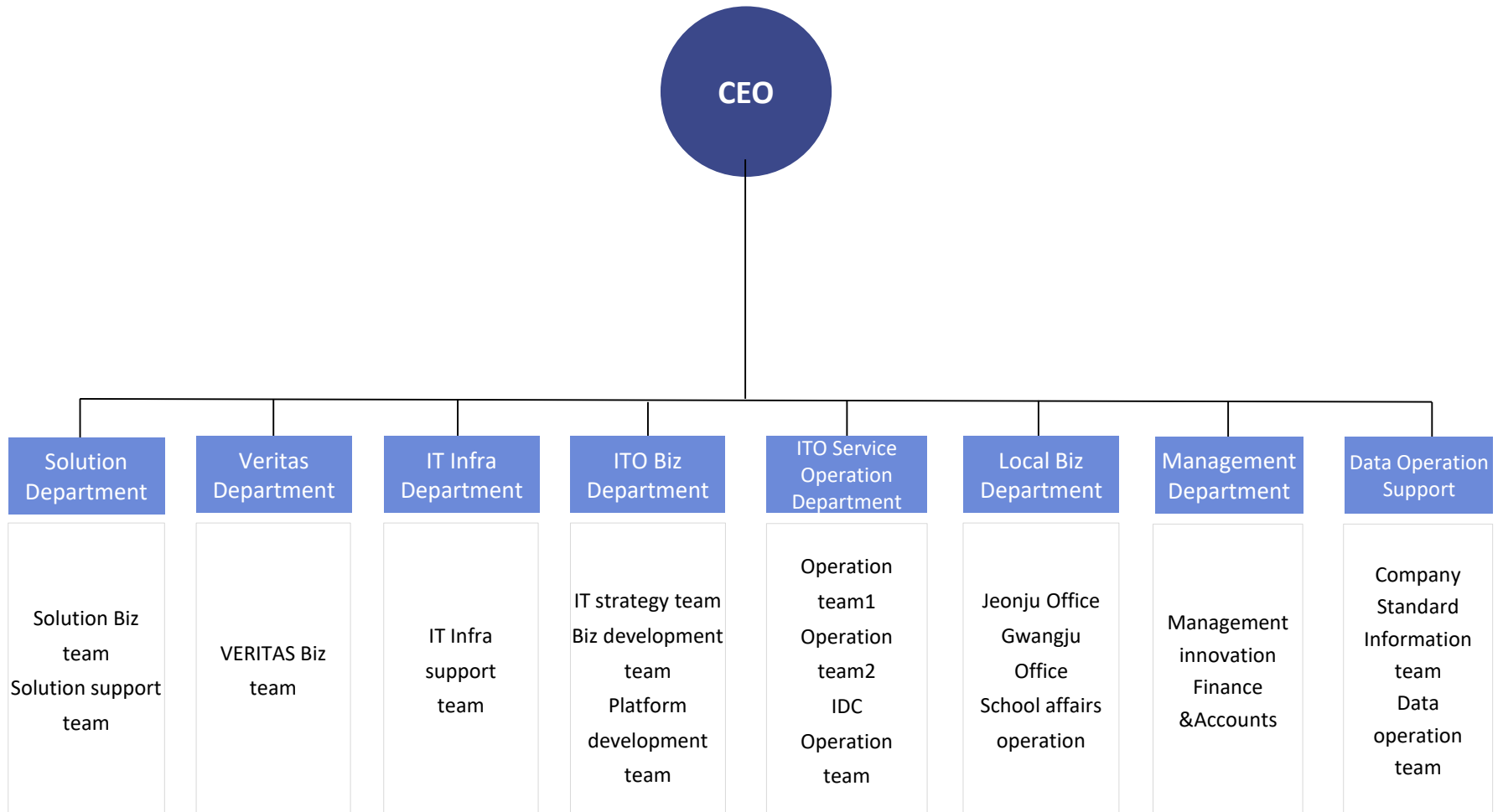
1991 ~ 2010

1991 ~ 2010

- 2010.12 Joint Research Partnership in augmented reality with GIST
- 2010.12 Contract mobile health tech cooperation agreement with worksmart labs, Inc.
- 2008.04 NetApp Star Partnership acquisition
- 2008.01 Reseller of VMware
- 2007.11 RFID middleware patent acquisition
- 2006.05 Jennifer Soft Partner Contract
- 2005.06 Relocated IDC(Sangbong-dong)
- 2004.09 Distributor of NetApp
- 2004.03 SAP All-In-One solution partner in CPG Sector
- 2003.06 Oracle DB SE VAD contract
- 2001.06 Oracle DB SE partner contract
- 2001.01 SAP Korea ERP partner contract
- 1998.01 Established Jeonju Branch office
- 1997.11 Changed name to Daesang Information Technology
- 1994.10 Established Gwangju Branch office
- 1993.11 Changed name to Miwon Information Technology
- 1993.08 Established IDC(Internet Data Center)
- 1991.07 Established Hannam information communications



Organization



Business area

Oracle Partner

- Database
- Middleware
- Applications
- Server & Storage Systems
- Engineered Systems
- cloud, mobile, open source, virtualization

Solution Provisioning

- SherpaSoft
- Quest
- Informatica
- SAP
- Jennifer
- SIMMS
- Lenovo

Veritas Distributor

- NetBackup, Backup Exec
- NetBackup Appliance
- Access Appliance
- InfoScale Availability
- InfoScale Storage
- Cloud Catalyst
- Enterprise Vault

Group ITO Service

- IT Strategy Planning
- System & Application Development
- Data center Operation
- Information Security

NetAPP Partner

- Cloud Data Service
- All-Flash Storage
- Converged Systems
- Hybrid Flash Storage

Business



Provides the world’s No.1 enterprise and cloud solutions as an Oracle partner and technical support services for Oracle system and software

Product	Solution&Service	Renewal	Team Miracle	ETC Solution
Database	Cloud	Renewal tech support of	Premier Support	Jennifer
Middleware	Mobile	current using Oracle	ACS	SIMMS
Applications	Oracle Database	DBMS		
Server&Storage	&IT infra for SAP			
Engineered System	Business Analytics			
Linux&OVM	Service			
Oracle Java				

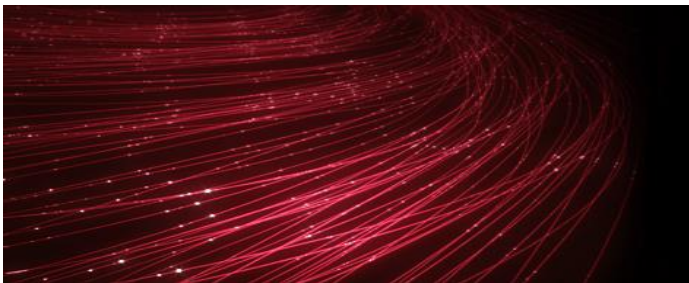
Business

Solution

Consulting

SI Biz

Outsourcing



VERITAS™

Providing solutions for business continuity as a distributor of Veritas, providing applications and platform services for multi-cloud and data protection.

PRODUCT

Data Management

- 360 Data Management
- Information map
- Cloud Mobility
- Resiliency Platform
- Cloud Point
- Enterprise Vault
- APTARE IT Analytics

Backup & Restore

- Netbackup
- Netbackup Appliance
- Flex Appliance
- Backup Exec
- Velocity
- Desktop and laptop option
- System Recovery

Biz Continuity

- InfoScale Availability
- Managed Continuity Service

SW Definition Storage

- Access
- Cloud Storage

Solution

Multi Cloud

GDPR

Data Protection

Data and Workload Mobility

Storage Optimization

Biz Continuity

Digital Compliance

Business

Solution

Consulting

SI Biz

Outsourcing



Quest[®]

Providing development tools suitable for various DB platform environments as a distributor of Quest Software Toad.

PRODUCT

TOAD

TOAD is a proven solution for database users and professionals that provides efficient quality control of development code, automatic tuning of SQL, simulating DB concurrent connection load using virtual users, easy DB monitoring, and data query and analysis of various DB platform environments.

SharePlex

An all-in-one solution that database vendors don't want to tell you is easy to achieve high availability, increase scalability, and consolidate data to offload reporting. Affordable replication solutions reduce budgets and allow you to move critical data in real time.

Business

Solution

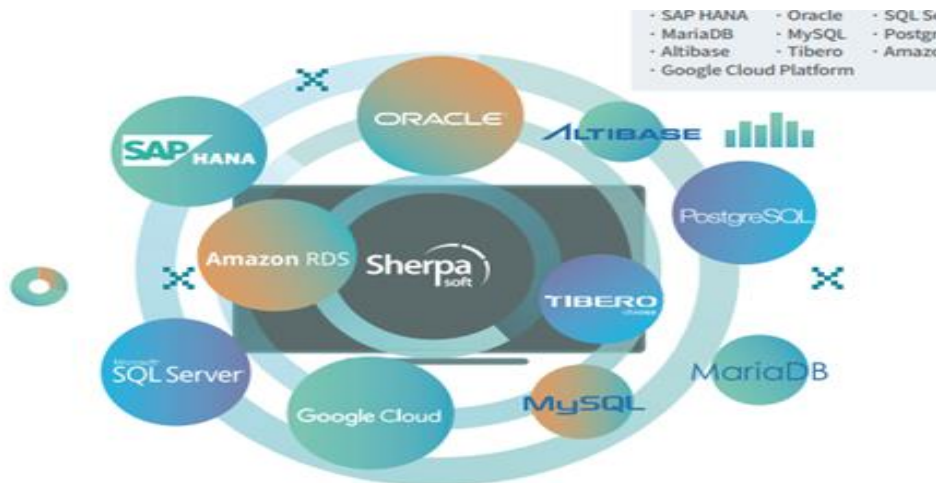
Consulting

SI Biz

Outsourcing



Sherpa Soft is a database performance management company that provides DB performance management solutions that are recognized not only in Korea but also abroad.



Business

Solution

Consulting

SI Biz

Outsourcing



Informatica is a leading company in data-driven digital transformation and enterprise data management.

PRODUCT

Data Engineering
Cloud Service
Data Integration
Intelligent Data Quality
Data Security
Master Data Management
Data Catalog

Solution

Transition to Cloud
Accelerate compliance with data
governance and regulation
Provide Analytical Insight
360° Promote participation
Ecosystem Search

Business

Solution

Consulting

SI Biz

Outsourcing



xFUSION

Providing server products optimized for customer business as the platinum partner of xFusion, the world's leading cloud computing and IT infrastructure provider

PRODUCT

Rack Server

- 1288H V6 server (General-purpose)
- 2288H V6 server (Balanced)
- 2298 V5 / 5288 V6 server (Storage-intensive)
- 2488H V6 server (Compute-intensive)
- 5885H V5 server (Mission-critical)

High Density Server

- X6000 V6 server

GPU Server

- G5500 server

Business

Solution

Consulting

SI Biz

Outsourcing



Meet aggressive services with time-and-location data access, integrated data protection and security, and instant delivery and resilient capacity support.

PRODUCT

Cloud Data Service

- NetApp Kubernetes Service
- Azure NetApp Files
- Cloud Volumes Service for AWS & GCP
- Cloud Sync
- Cloud Backup Service

Converged Systems

- FlexPod
- NFLEX
- NetApp HCI

All-Flash Storage

- AFF A-Series
- NVMe Storage
- SolidFire
- EF-Series

Hybrid Flash Storage

- FAS
- E-Series

Solution

Integrate Cloud Data Services

Deliver Data Insights and Control

Accelerate DevOps Journey

Protect and Secure Data

Gain Data Center Efficiencies

Optimize Unstructured Data

Accelerate Workloads and Analytics

Business

Solution

Consulting

SI Biz

Outsourcing



The world's leading business solution provider that maintains the world's No. 1 ranking in business applications in Korea.

SAP Business One

A single system that brings together the entire business of S&M enterprises

- Adaptability specific to industrial needs
- ERP solutions optimized for small and medium enterprise characteristics

Supplying Industry Solutions from Validated Partners

(Additional tax, electronic tax invoice, personnel benefits etc.)

Consulting and Development Operations

(Reflects unique enterprise and industry processes)

SAP All in One

- ERP Solutions for Midsize Businesses with Deep Industry Best Practices
- Interaction of various processes, modules
- Easy for a variety of complex business.
- CPG industry

Business

Solution

Consulting

SI Biz

Outsourcing



- Integrated server, storage, and network brands
- Unified Server Foundation Based on Integrated Server
- Affordable server portfolio

PRODUCT

SERVER

- ThinkSystem SR Series
- ThinkSystem ST Series
- ThinkSystem SN Series
- ThinkSystem SD Series

STORAGE

- ThinkSystem DM Series
- ThinkSystem DE Series
- ThinkSystem DS Series

HCI (Hyper Converged Infrastructure)

- ThinkAgile HX Series (Nutanix)
- ThinkAgile CP Series
- ThinkAgile SX for Microsoft Azure Stack

NETWORKING

- ThinkSystem NE Series (Rack Switch)
- Flex System SI Series (Fabric Switch)
- Flex System EN Series (Ethernet Switch)

Solution

Artificial Intelligence

Big Data & Analytics

Business Applications

Client Virtualization

Cloud

DevOps

Hyperscale Computing

NFV Solutions for CSPs

Business

Solution

Consulting

SI Biz

Outsourcing



Enterprise Resource Management consulting

Continuous change management consulting support for immediate response to changes in the market environment and the possession of staff who have years of experience and projects



Corporate portal consulting

Implement consulting services with expertise in knowledge management portal and education management portal centered on consultants who are experienced in building application solutions



Mobile Business Consulting

Define optimal mobile business model from customer requirement analysis to environmental diagnosis, establishment of execution plan, system design, and establishment strategy, and provide a strategic way for successful establishment by providing roadmap for requirements for model execution

Business

Solution

Consulting

SI Biz

Outsourcing



Industry SI business

Provides a comprehensive service that integrates the accumulated technologies of hardware, software, communication systems and related professional consultants and engineers with complex system components as the IT environment changes



Specialized SI Project: new Administrative system

Rapidly process computerized tasks and manage massive access control systems to ensure stable management of administrative systems

Business

Solution

Consulting

SI Biz

Outsourcing



ITO Type

Total ITO

Full outsourcing of IT Service

Selective ITO

Some IT Service outsourcing

Combined Service

SI+ITO

Outsourcing for post-SI operations

ISP+ITO

Consulting and outsourcing for enterprise IT planning

BPO+ITO

Transfer of specific tasks such as accounting, personnel, etc. and carry out related ITO

Biz Type

Sole acquisition

Outsourcing service company alone acquired assets

Joint Venture

Share outsourcing service company and customer share

BTO

Outsourcing service company builds system and transfers it to customers

BOT

Outsourcing service company builds the system and transfers it to the customer after the investment is recovered

Solution Partners



Integrated Cloud Applications & Platform Services

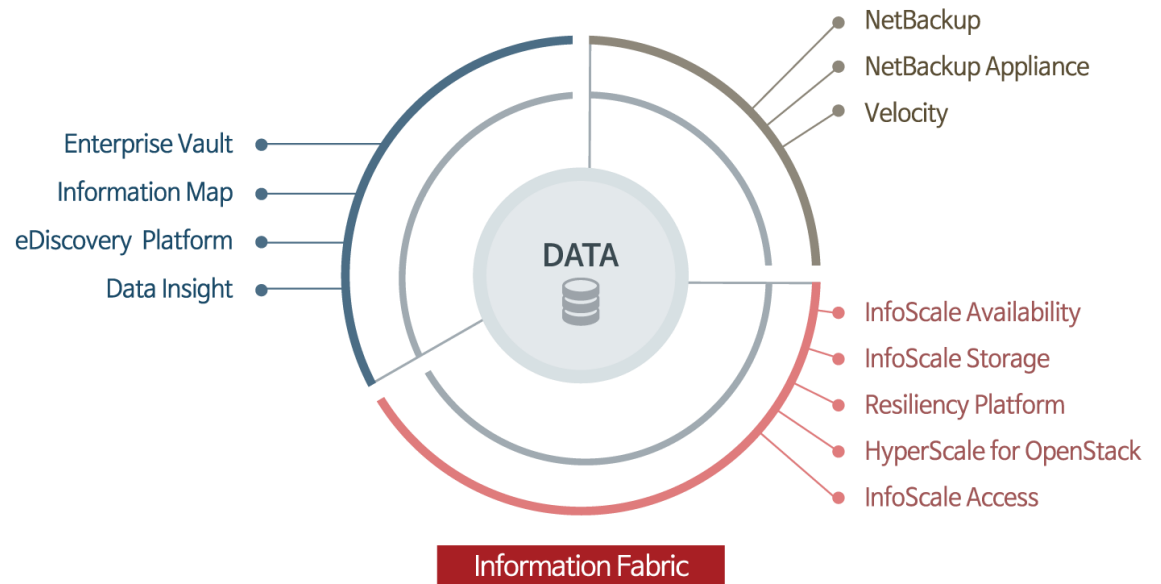
- **Database** : Database SE2, EE & Options (Database In-Memory, Multitenant, Advanced Security, Partitioning, RAC)
- **Middleware** : WebLogic Server, IDM, Coherence
- **Application** : BI & EPM, Endeca
- **Server & Storage System**
: SPARC , x86, Fujitsu M10 server, Netra system, All Flash/NAS/SAN Storage & Tape
- **Engineered System**
: Exadata, ODA, Exalogic, Exalytics, SuperCluster, Private Cloud Appliance, Big Data Appliance, ZDLRA
- **Open Source/Virtualization** : MySQL, Oracle Linux & VM
- **Cloud** : SaaS(HR/ERP/CX/EPM/SCM Cloud), PaaS(Database Cloud, Database Backup Service, Java Cloud, Documents Cloud), IaaS(Compute/Storage Cloud)

Solution Partners

VERITAS™

IT'S TIME FOR VERITAS™

As a "Veritas" distributor of applications and platform services for multi-cloud and data protection, it provides solutions for backup and recovery and business continuity.



Solution Partners



Unified storage system & software solution

- NetApp delivers innovative storage and data management solutions that accelerate your business transformation and drive down costs.
- **Storage System:** Flash Storage system (All-Flash FAS, EF series), FAS storage system(FAS8000 series, FAS2500 series), E-Series storage system(E5600, E2700)
- **Software:** Clustered Data ONTAP, NetApp Cloud ONTAP, SANtricity OS, Data ONTAP Edge, OnCommand management software, Data protection software, NetApp FlexArray storage opensource software
- **Solution:** FlexPod, cloud and opensource, backup and recovery, big data

Solution Partners



Virtualization & Cloud Infra. solution

VMware is the global leader in virtualization and cloud infrastructure, delivers customer-proven solutions that accelerate IT by reducing complexity and enabling more flexible, agile service delivery.



Integrated maintenance management solution

SIMMS is a service that provides customers with A to Z related to maintenance and asset management, MA inspection management, fault management, service request management, work management, One-stop integrated management. Also provides a mobile version to check and request MA check history and fault history in real time.



True Real-time Application Performance Manager

JENNIFER ensures the performance and availability of enterprise applications by providing 24×7 application monitoring, real-time problem troubleshooting, fast resolution of performance bottleneck, and more in order to maximize application availability and minimize system downtime.



Business Intelligence Optimization Solution

As a partner in the SAP Application A1, B1 ERP family of products, ERP solutions for real-time business enable you to build and operate an information system for large enterprises and mid- to small-sized industry groups, and have information system suggestions and management experience for a wide range of customers for SAP ERP, so you can experience solutions for making decisions based on your situation.

Solution Partners



Providing Toad

TOAD is a solution proven by database users and experts. It provides efficient quality management of development code, automatic SQL tuning, DB simultaneous connection load simulation using virtual users, simple DB monitoring, and data query and analysis for various DB platform environments.



Providing data management

Informatica promotes data-driven digital transformation, It is a leading company in enterprise data management.



Improving DB performance

Selfasoft is a company specializing in database performance Management and provides DB performance management solutions recognized not only in Korea but also abroad

Reference

Oracle	Veritas	NetApp	Jennifer	VMware	SAP
--------	---------	--------	----------	--------	-----

Enterprise Supply

KT		KTDS DBMS (Oracle EE/SE)
SAMSUNG		SAMSUNG SDS DBMS (Oracle EE/SE), SAMSUNG electronics MySQL EE
LG		LGNsys DBMS Supply (Oracle EE/SE)
POSCO		POSCO DBMS (Oracle EE/SE)
Hyundai Merchant Marine		HMM Orders for "next-generation infra build projects based on the cloud"
Kyobo Life		Kyobo Life DBMS ULA

MA

Manufacturing, Distribution & Logistics		BGF retail, K2 Korea, LS Nikko, SPC networks, DAEWOO EnC, Deasung, Ssangyong Motor Company, Hanmi,AsianaIDT etc.
		wetland, National Assembly Library, Red Cross, KIET, Seoul metropolitan fire& disaster headquarters, Incheon metropolitan city office of education , KOCCA etc.
Public		IBK Investment, KT sky life, DKU, Kangnam Univ., Toshiba Technology Korea, Digital chosun, seoul gas, SEOUL CREDIT GUARANTEE FOUNDATION, Korea Institute of radiological&medical sciences etc.
Others		
... Maintenance of approximately 60 customers		

Reference

Oracle	Veritas	NetApp	Jennifer	VMware	SAP
--------	---------	--------	----------	--------	-----

Oracle Engineered System Supply	Exadata	Azubu Korea, BGF retail, JB woori capital, KT skylife, SK broadband, SPC networks, STA, Daesang Bestco, KOREA LAND AND GEOSPATIAL INFORMATIX CORPORATION, Samsung SDS, Able c&c, Hanmi, Chosunilbo, CN119, Coway, ebc card, National Agency for Administrative City Construction, KiSTi, Hyundai homeshopping
	SAP on Exadata	Daesang, GS caltex, LF, KT rental
	ODA	Hankyung University, Korea national sport univ., Press Arbitration Commission
	Exalytics	Azubu Korea, ARAirport Railroad Co.
	Endeca	Koreanair, Samsung electronics, Hyundai MOTOR
	SuperCluster	Korea Enterprise Data
Cloud Supply	Hyundai Merchant Marine	the first global shipping company to establish a cloud-based next-generation system and migrate IBM DB2 to Oracle DB
	cyberlogitek	Meratus Project Oracle Cloud
	Chorocmaeul	Paas & Saas
	Daesang	Global homepage construction
	KCND	Oracle Cloud Service, MSP

Reference

Oracle	Veritas	NetApp	Jennifer	VMware	SAP
--------	---------	--------	----------	--------	-----

Supply & MA

Medical	Wonkwang Univ., Ilsan hospital, Seoul National University Dental Hospital, Catholic Univ.of Korea Incheon ST.Mary's hospital, Seoul rehabilitation hospital
Manufacturing, Distribution & Logistics	LG electronics, LG chemistry, Samsung display, Samsung electronics, ABB Korea, BGF reatil, Lotte Chilsung, home&shopping, CJ olive, Kumho Tire, Koreanair, Doosan, Lotte engineering&construction, Lotte department, Lotte duty free, POSCO, Hyundai heavy industries
PUBLIC	Korea Hydro&Nuclear Power, National Health Insurance Service, KEIS, Gyeonggi Urban Innovation, Ministry of Education, Gwacheon city, Korea Transportation Safety Authority, Gunsan city, Korea Workers' Compensation & Welfare Service, Ministry of economy and finance, Ministry of Education, KOREA SOUTHERN POWER , DAEJEON METROPOLITAN EXPRESS TRANSIT CORPORATION, MINISTRY OF JUSTICE, SFAC, SUWON CITY , Ulsan Metropolitan Council, KOREA GAS CORPORATION,
FINANCE	IBK(INDUSTRIAL BANK OF KOREA), IBK insurance, JB bank, KB star, KB card, KB property insurance,KEBbank, NH savingsbank, KFTC, Meritzfire, Shinhangroup, Shinhaninvest, Wooribank, Hyundai Merchant Marine

Reference

Oracle	Veritas	NetApp	Jennifer	VMware	SAP
--------	---------	--------	----------	--------	-----

Supply & MA

Medical

CMC & affiliated Hospitals (Seoul/Yeouido/uijeongbu/Incheon/Bucheon/Daejeon St.mary Hospital, St.Vincent Hospital, St.Paul Hospital), Konkuk University Medical Center, Konyang University Hospital, National Traffic Accident Rehabilitation Hospital, Sun General Hospital, Boramae Medical Center, Samsung Medical Center, Seoul Medical Center, Severance Hospital, Wonkwang University Hospital, Wonju Severance Christian Hospital, Chonnam National University Hospital, Jeju National University Hospital, Hyemin Hospital etc.

Manufacturing, Distribution & Logistics

CJ Cheiljedang, CJ Healthcare, GN Food, GS NEOTEK, HLDS, LG Innotek, LG Electronics, LG Chem, KD NAVIEN, KY Entertainment, Dow Chemical Company, DONG-A Socio Holdings, MagnaChip, Samsung SDS, Samsung Display, Samsung Electronics, Synopsys Korea, SHINWON, Intel Mobile Communications, S-OIL Total Lubricants, Han Il E-Wha, Heesung Catalysts etc.

Reference

Oracle	Veritas	NetApp	Jennifer	VMware	SAP
--------	---------	--------	----------	--------	-----

Supply & MA

PUBLIC

Gapyeong County, Hongcheon County, Gyeonggido Office of Education, Korea Institute for Advanced Study, National Information Resources Service, Korea Seed & Variety Service, National Museum of Korea, Agency for Defense Development, Ministry of National Defense, Animal and Plant Quarantine Agency, Ministry of Agriculture & Food and Rural Affairs, Supreme Prosecutors’ Office, Supreme Court of Korea, Presidential Archives, Korea Chamber of Commerce & Industry, Teachers Pension, Cheongwadae, Korea Creative Content Agency, KEPCO, The Academy of Korean Studies etc.

Others

CJ E&M, JTBC, KG Inicis, KT Ringo, KTB Investment & Securities, NS Mall, SBI Savings Bank, SK Broadband, SK Energy, Korea University, Nomura Securities, Nielsen Korea, Danawa, Daekyo, Korean Airlines, Merrill Lynch Korea, Samsung Life Insurance, Sungkyunkwan University, Welcome Savings Bank, Initech, Halla Corp. etc.

Reference

Oracle	Veritas	NetApp	Jennifer	VMware	SAP
--------	---------	--------	----------	--------	-----

Supply & MA

Public Sector	Agency for Defense Development, CDC, KAB, KAMCO, KCCI, KECO, KERIS, KGS, KISTI, Korea Customs Service, Korea Cadastral Survey Corp., Korean Red Cross, KPX, National Tax Service, NCIA, Seoul Metropolitan Government, SMRT, TTA, etc.
University	Handong Global University, Hankuk University of Foreign Studies, Jeju National University, Kunsan National University, Sejong Cyber University, Seokyeong University, WKU, Yonsei University, etc.
Others	Boryung, CU, JBBank, JBEdU, Korea East-West Power, BGF retail, Samsung Networks, Yuhan, etc.

Reference

Oracle	Veritas	NetApp	Jennifer	VMware	SAP
--------	---------	--------	----------	--------	-----

Supply & MA

University		CBNU, Honam University, WKU, WKDU
Healthcare		Yeouido St. Mary Hospital, CUH
Public Sector		JBDC

Reference

Oracle	Veritas	NetApp	Jennifer	VMware	SAP
--------	---------	--------	----------	--------	-----

Supply & MA

Group affiliate | Daesang, Daesang Life Science, Chorocmaeul, Daesang F&B

others | Korean Standards Association, Dongwon, Clifford etc.

Daesang Affiliates

Domestic

DAESANG Holdings

DAESANG

DAESANG Welllife

DAESANG Information Technology

DAESANG Dives

DAESANG Deliheim

DAESANG Networks

DAESANG Construction

DAESANG Food Plus

HaeSung Provision

DU FOOD

DAESANG Foundation

DAESANG Cellgene

SINAN SUN-DRIED SALT

Representative Brand



청정원



Rosebud
Dessert Cafe



대상 Bestcō



집으로 ON

Daesang Affiliates

Global Network



Communication Channel



02-3408-0216



dit_email@daesang.com



<http://www.daesangit.com>



<http://www.facebook.com/daesangit>